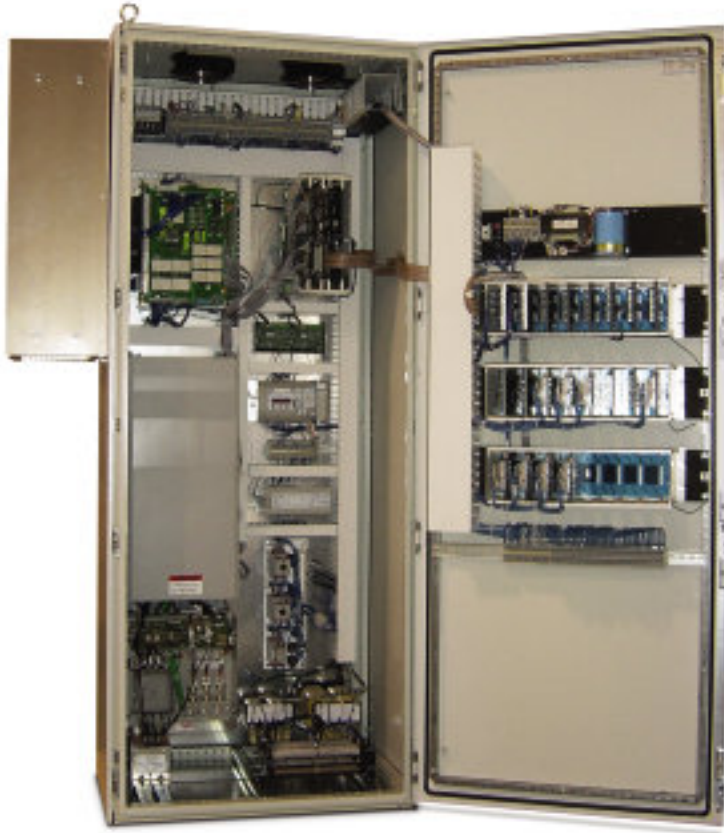


Elevator Control A.C. & D.C. Traction Applications



KONE Spares is proud to introduce a reliable control system to the elevator industry. The CETEK-ONE™ is a nonproprietary elevator control for A.C. and D.C. traction applications. Built on solid industry experience, this controller provides features current for today, with a familiarity of what the industry has known for years.

CETEK-ONE Features:

- Excellent motion control with simplified shaft set-up and tuning, along with an extremely wide range of logic control options and flexibility.
- Installation/service time reduced by the extensive adjustment capabilities and diagnostic system in the controller.

- Diagnostics include: Historical fault log records and a powerful logic checking tool to view a system's operation to determine why requested actions aren't executing.
- Full integration between CETEK-ONE and Lift-Net™ is bringing elevator information management to building owners and service providers in a comprehensive way, which includes traffic analysis, fault monitoring and connectivity to the service management side of your business.

References

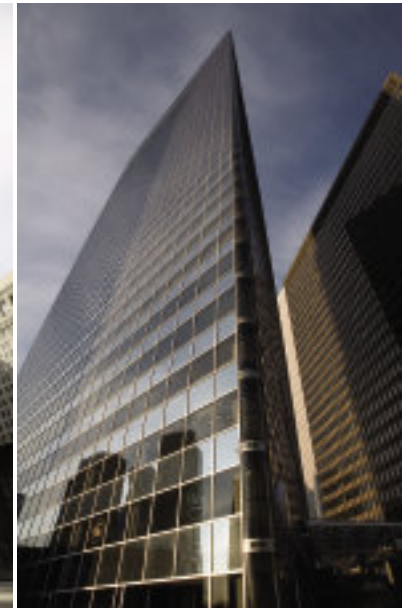
This technology has successfully been installed in over 10,000 elevators nationwide known as Miprom 21.



311 S. Wacker
Chicago, Illinois



John C. Kluczynski
Chicago, Illinois



Swissôtel
Chicago, Illinois

CETEK-ONE LOGIC CONTROL FEATURES (Standards and Options)*

FEATURES	SIMPLEX	2-CAR GROUP	3-8 CAR GROUP	FEATURES	SIMPLEX	2-CAR GROUP	3-8 CAR GROUP
Hall Button Protection – Auxiliary Dispatch	N/A	■	■	Two Dispatch Floors	N/A	◆	◆
Fireman's Control: Main Floor & Car Key Switches, Sensor Circuits & Alt Return Floor	■	■	■	Future Car(s)/Future Floor(s): Card Rack Space Only	◆	◆	◆
Loadweigh	■	■	■	Selected Floor Parking	▼	▼	▼
Anti-Nuisance Feature	■	■	■	Coincidental Calls	N/A	■	■
Door Obstruction Feature	■	■	■	Long Wait Hall Calls	N/A	■	■
Door Protection Cutout Switch (or Button)	■	■	■	Quickest Time to Call	N/A	■	■
Multiple Door Timing	■	■	■	A. I. Dispatching	N/A	■	■
Early Door Closing	■	■	■	UP Peak and DOWN Peak	N/A	■	■
Reduced Speed Closing	■	■	■	Sequence Starting	N/A	■	■
Nudging	■	■	■	Car Station Security	◆	◆	◆
Independent Service	■	■	■	Per-Floor Security	◆	◆	◆
Independent Frt Service w/Separate PB Riser	◆	◆	◆	Lift-Net System	◆	◆	◆
Hospital Emergency Service	◆	◆	◆	Floor Key Switch Lockouts	◆	◆	◆
Medical Emergency Recall	◆	◆	◆	Card Reader Interface	◆	◆	◆
Home Landing	■	N/A	N/A	Binary Position Indicator Drive	◆	◆	◆
Main Lobby Preference	N/A	■	■	Discrete Position Indicator Drive	◆	◆	◆
Zoned Access Switches	■	■	■	Attendant Operation	◆	◆	◆
Controller Shut Down Switch	▼	▼	▼	Door HOLD Feature	◆	◆	◆
Emergency Power	▼	▼	▼	Freight Door Control	◆	◆	◆
Fire Status Panel	▼	▼	▼	Baby/Infant Security	◆	◆	◆

SYMBOL KEY: ■ Standard Feature ◆ Feature Available at Additional Cost ▼ Logic Included in Control. Fixture Available at Additional Cost

*NOTE: Above list is limited to common features. Please call KONE Spares to discuss all the options that are available.

KONE SPARES, 325 19th Street, Moline, IL 61265 • Phone: 800.343.3344 • Fax: 309.743.5541 • www.konespares.com

KONE Inc. reserves the right to alter design and specifications without prior notice.
CETEK-ONE is a trademark of CETEK, Inc. and Lift-Net is a trademark of Integrated Display Systems, Inc.

©2007 KONE Inc.
SF2864
Printed in U.S.A.